

1. 適用範圍 / SCOPE

WH60 系列，適用於純電動汽車和混合動力汽車的全範圍分斷熔斷器。  
WH60 series, general purpose fuse for EV/HEV.



2. 產品型號 / TYPE

例「example」：

WH60	100A	150V	① 系列號 / Series Number
↓	↓	↓	② 額定電流 / Rated Current
①	②	③	③ 額定電壓 / Rated Voltage

3. 額定電流和額定電壓 / RATED CURRENT AND RATED VOLTAGE

額定電流 / Rated Current: 20A~600A


額定電壓 / Rated Voltage: 150VDC / 100VDC

4. 標示 / MARKING

保險絲上需有下列標示/The fuses shall have the following marking

製造工廠的標識+系列號/ Manufacture's Logo+ Part Number:

額定電流+額定電壓/ Rated Current (A)+ Rated Voltage(V):

 WH60  
 \_ A  
 \_ V DC  
 \_ V DC

注意 / Note :

對標示的大小和位置沒有規定 / Size and position of the markings shall not be provided.

5. 外觀及形狀 / APPEARANCES AND CONFIGURATION

5-1 外觀：不應有破碎、明顯的污斑。

Appearances: There shall not be break up and any remarkable blotch.

5-2 螺栓安裝,提供其他安裝方式选择

Stud-mount, optional for other installtion

6. 工程圖和結構 / OUTLINE DRAWING AND STRUCTURE

6-1 工程圖 (單位: mm) / Outline Drawing and Dimensions (Unit: mm)



雙拼/Twins

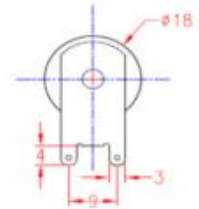
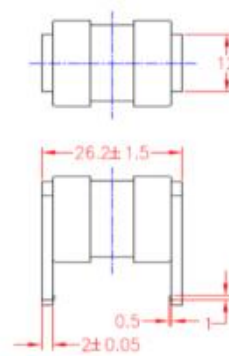
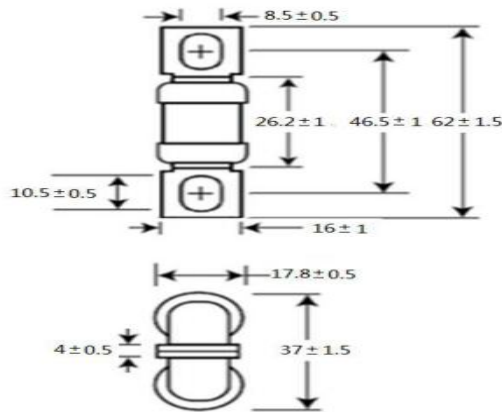
類型和安裝方式代碼: VT

Type & Assembly code: VT

單體/Single

類型和安裝方式代碼: P

Type & Assembly code: P



7. 電氣特性 / ELECTRICAL CHARACTERISTICS

% of Ampere Rating (A)	Operating	
	Min	Max
200%	1s	300s
300%	0.2s	30s
500%	0.1s	10s

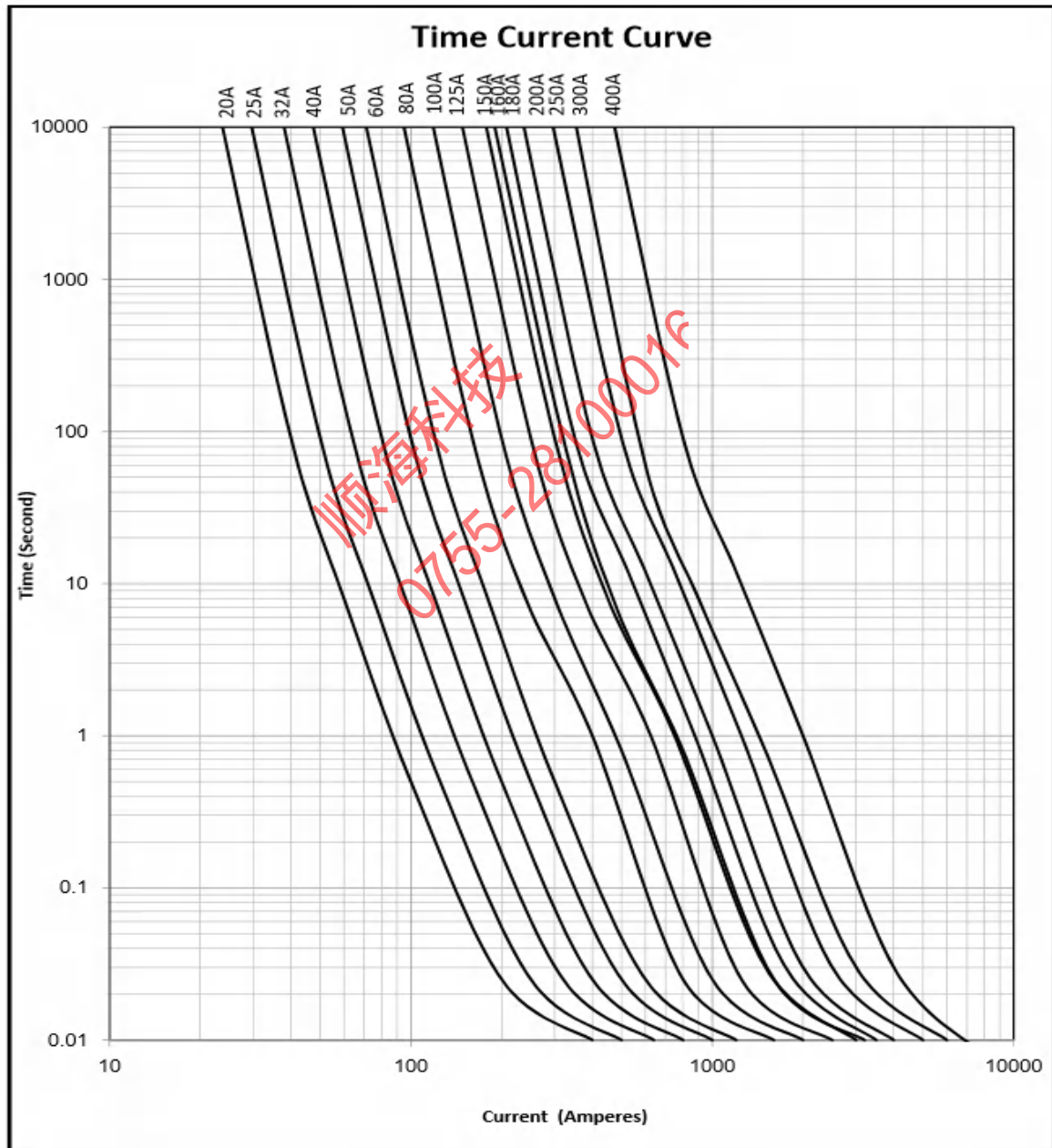
品名 Type	料號 Ordering P/N	額定電流 Rated Current	額定電壓 Rated Voltage	分斷能力 Breaking Capacity	I <sup>2</sup> t 值 Typical I <sup>2</sup> t (A <sup>2</sup> S)	電壓降 1.0In Typical Voltage drop	1 倍功耗 1.0In Typical Power loss
	WH60-XXX- P (-VT)						
WH60	WH60-32- P	32 A	150 Vdc 100 Vdc	10kA	2560	135 mV	4.3W
	WH60-40- P	40 A			4100	125 mV	5.0W
	WH60-50- P	50 A			6000	120 mV	6.0W
	WH60-60- P	60 A			9000	117 mV	7.5W
	WH60-80- P	80 A			16000	113 mV	9.0W
	WH60-100- P	100 A			25000	110 mV	11.0W
	WH60-125- P	125 A			40000	105 mV	13.0W
	WH60-150- P	150 A			68000	112 mV	17.8W
	WH60-160- P	160 A			64000	110 mV	19.0W
WH60-180- P	180 A	92000	105 mV	19.5W			

	WH60-200- P	200 A			120000	100 mV	20.0W
	WH60-250- VT	250 A			190000	85 mV	20.7W
	WH60-300- VT	300 A			270000	90 mV	23.1W
	WH60-400-VT	400 A			480000	100 mV	40.0W

溫升：60%額定電流小於等於 45K / Temperature Rise:  $\leq 45K$  with 60% of rated current



### 8. 時間電流曲線 Time-Current Curve



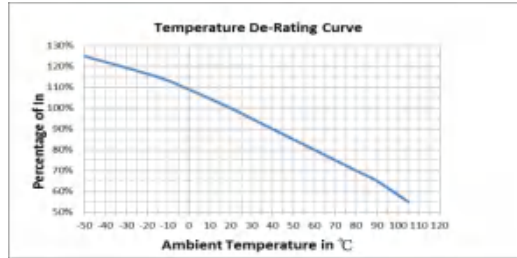
9. 環境特性 / ENVIRONMENTAL CHARACTERISTIC

9-1 操作溫度範圍: -55°C ~ 125°C / Operating Temperature:-55°C ~ 125°C

若貴司操作環境溫度超出25±5°C範圍，在選用保險絲規格時，需考慮操作環境溫度對保險絲的影響。  
請參照：溫度-電流曲線圖。

When choosing the fuse's specification, if the operating environmental temperature beyond the scope from 20~30°C, you should consider the environmental temperature's affection to fuses.

Please refer : Temperature-Current curve:



9-2 存儲條件 / Storage Conditions

在溫度+10°C ~ 60°C、相對濕度≤75%的密閉條件下可存放3年。

Under airtight in temperature+10°C ~ 60°C、relative humidity ≤75% can store 3 years.

在溫度+10°C ~ 60°C、相對濕度為95%的非露天下最多可存放30天。

Without dew in temperature+10°C ~ 60°C、relative humidity be 95% maximum value for 30days.

10. 安裝方式及條件 / INSTALLATION WAY AND PARAMETERS

10-1 螺栓安裝,提供其他安裝方式選擇

Stud-mount, optional for other installtion

11. 安全認證及編號 / STANDARDS AND APPROVALS

UR	Pending
CUR	pending

12.其他 / OTHERS

12-1 如果在使用中有超出本規格書的要求，必須經由雙方協商確認。

In the event that an impropriety is found beyond this specification, it shall be fixed by mutual agreement between the parties.

12-2 如果本規格書有不適當的情況，必須通過雙方協商並由本公司修改。

In the event that an impropriety is found in this specification, WALTER ELECTRONIC CO., LTD. shall amend it by mutual agreement between the parties.

版次	製作	確認	審核
第八版	侯愛珍	吳讓彬	Andrew